

ARCHITECTURAL SLABS FOR ROOF DECK SYSTEMS

TECHNICAL GUIDE



UNILOCK
DESIGNED TO CONNECT.



PRODUCT: Beacon Hill™ Smooth Slab- Granite Mist
PROJECT: 369 W Grand Roof Deck, Chicago, IL
DESIGNER: Daniel Weinbach & Partners Ltd.



ROOF DECK SYSTEMS

Unilock® offers a wide variety of textures and finishes that complement any pedestal paver system or roof deck application. Roof deck hardscape systems act to protect the roof from the elements while providing additional usable space for gathering and entertaining in a unique outdoor setting.

With the many color, finish and size options available from Unilock, we will make your vision come to life.

- 3** Roof Deck Systems
- 4** Urban Terraces
- 5** Commercial Projects
- 6** General Overview
- 7** Quality Assurance
- 8** Large Format Pavers & Slabs
- 18** Porcelain Tile
- 20** Coping Options
- 23** Roof Deck Installation Systems
- 25** U-Cara Wall Options
- 33** Accessories
- 35** DriveCel
- 37** Pedestals



PRODUCT: Porcelain - Davinci Birch and Gotham Nero
PROJECT: The Residences at 1111 Beacon St. Brookline, MA
DESIGNER: Warner Larson Group

URBAN TERRACES

In an urban environment, even the tiniest outdoor oasis can serve as a reprieve from bustling surroundings. However, tight lots can present a design challenge. Roof deck applications allow for more usage of space by providing functionality in an area that is often overlooked.

Unilock architectural slabs and retaining walls come in a wide selection of shapes, textures and colors designed to deliver high aesthetic impact and maximum function in hardscapes that are designed to complement their organic counterparts.



PRODUCT: Umbriano® Winter Marvel
PROJECT: One Old Mill, Toronto, ON
DESIGNER: Janet Rosenberg & Studio

COMMERCIAL PROJECTS

Roof deck applications let you capitalize on previously unusable space to create a functional outdoor amenity area. The installation technologies behind suitable pavers for rooftops and pedestal systems are transforming elevated and sloped roof surfaces into outdoor amenities that are not only functional but aesthetically beautiful.

Transform existing unused roof spaces into functional outdoor amenity areas with Unilock products.

GENERAL OVERVIEW

The full line of Unilock architectural roof deck slabs, pavers, natural stone slabs and porcelain tile offer many different finish and color options. Continue design themes from on-grade to rooftop applications creating a harmonious project between building site paving and outdoor spaces.

Unilock architectural slabs are offered in six thicknesses and range from 9 lbs/sqft to 48 lbs/sqft for various roof structural weight limits.



SOLAR REFLECTANCE

34
SRI

Solar Reflectance Index (SRI) is a criterion used by USGBC that measures values of sunlight and reflectance from built surfaces. It is used to measure urban heat island effects in city centers. Dark pavement absorbs heat during the day and then releases it at night. This process creates a situation that causes urban centers to stay warmer all the time which contributes to air pollution and increased energy consumption. Careful selection of materials and colors can help reduce urban heat island effects.

Potential LEED® credits are available for products with an SRI greater than 33. Look for SRI values beside the color name within our product selection, where applicable.

ARCHITECTURAL SLAB OPTIONS

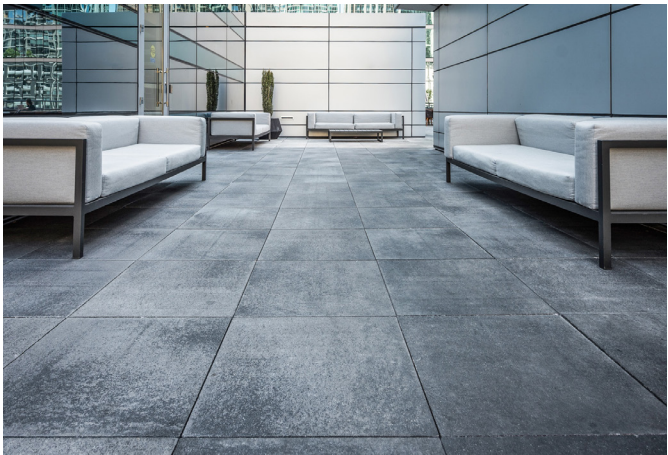
Measurements shown in this catalog are meant for pedestal applications. The dimensions shown are taken from the side of the paver to the side of the paver. Consult your regional Product Data Resource Guide for locally stocked colors.

THICKNESS	PRODUCT TYPES	SHAPE	PRODUCT WEIGHTS
2cm	Natural Stone Porcelain Tile	900 x 600mm 600 x 600mm 600 x 300mm 400 x 800mm 600 x 900mm	9 lbs/sq.ft.
3.8cm	Natural Stone (Bucine Bluestone)	900 x 600mm 600 x 600mm 600 x 300mm	
5cm	Arcana™ Slab Skyline™ Soreno™ Slab	600 x 600mm 600 x 450mm 600 x 600mm 600 x 300mm 400 x 800mm	24lbs/sq.ft.
6cm	Beacon Hill™ Smooth Slab Metro Slab™ Revela™ Slab Umbriano® Slab	950 x 570mm 760 x 380mm 890 x 540mm 890 x 540mm	
7 cm	Richcliff® Slab Umbriano® Slab	900 x 300mm 600 x 300mm 600 x 200mm 600 x 600mm	33 lbs/sq.ft.
10cm	Promenade™ Plank Slab Endura Smooth, Il Campo®, Series™ Finishes Umbriano® Slab	600 x 200mm 900 x 450mm 900 x 900mm	48 lbs/sq.ft.

+ Special order only (verify locally manufactured finishes with your Unilock® Representative). **Available in select markets. All sizes are nominal, please refer to finish page for actual face dimensions to establish grid spacing. Additional shapes are available, please contact your local Unilock Representative for more information.

QUALITY ASSURED

Unilock manufacturing teams have an unrelenting commitment to shipping only top quality products. Our world-class production facilities are renowned for their safety and cleanliness and are staffed with the most experienced production people in the industry. Our continual investment in the most technologically advanced equipment ensures we're able to provide the best in product quality, consistency and style.



UNILOCK PRODUCTS ARE

- | Tested from raw materials to finished product
- | Tested hourly for product density
- | Designed to meet all dimensional tolerances
- | Inspected by dedicated quality control staff
- | Meet and exceed industry quality standards (ASTM & CSA)
- | Durable and slip-resistant
- | Made with colorfast pigments
- | Resistant to salt erosion and chlorine

TESTING SPECIFICATIONS

Unilock architectural roof deck slabs, natural stone and porcelain tile have been manufactured and quarried to meet and exceed ASTM and CSA standards. Contact your Unilock Representative for specific product results.

UNILOCK CONCRETE SLAB - MINIMUM STANDARDS					
Thickness	ASTM C140 Compressive Strength	ASTM C140 Water Absorption	ASTM C1645 Freeze/Thaw*	ASTM C1782 Flexural Strength	CSA 231.1 Flexural Strength
1¾"	8,500 PSI MIN.	5% MAX	<500 G/M2	>725 PSI AV.	>650 PSI MIN.
2"	8,500 PSI MIN.	5% MAX	<500 G/M2	>725 PSI AV.	>650 PSI MIN.
2¾"	8,500 PSI MIN.	5% MAX	<500 G/M2	>725 PSI AV.	>650 PSI MIN.
4"	8,500 PSI MIN.	5% MAX	<500 G/M2	>725 PSI AV.	>650 PSI MIN.

UNILOCK PORCELAIN TILE - MINIMUM STANDARDS				
Thickness	ASTM C373 Water Absorption	ASTM C1026 Freeze/Thaw	ASTM C648 Breaking Strength	ANSI 137.1 Slip Resistance
¾"	-0.1%	Resistant	≥ 3400 LBS	≥ 0.60

ASTM - American Society of Testing and Materials CSA - Canadian Standards Association ANSI - American National Standards Institute



ARCANA™

ENDURACOLOR™



Avorio (SRI 53)

**Special Order Colour*



Corvara (SRI 34)



Modena (SRI 53)



Vivanto

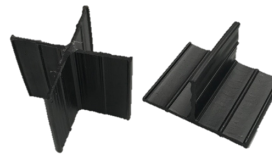


23 3/8 x 23 3/8 x 2"
600 x 600 x 50mm

Ideal for Pedestals



17 1/8 x 23 3/8 x 2"
450 x 600 x 50mm



X & T Slab Spacers

- 250 per bag
- X & T bagged separately
- T spacers 2" x 1"
- X spacers 2" x 2"



TECHNICAL ADVANTAGES



Factory sealed to provide integral surface protection from stains

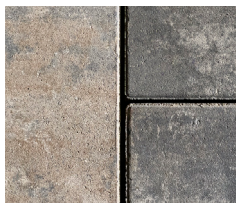
Unilock recommends using slab spacers when installing Arcana on an open grade surface. "T" spacers are needed for running bond patterns. "X" spacers are needed for stack bond patterns. Please contact your Unilock Territory Manager for more information.

Consult the Unilock Product Resource Guide for more Technical information and Product data information.



BEACON HILL™ SMOOTH SLAB

ENDURACOLOR™



Fossil



Granite Mist



Opal Blend



TECHNICAL ADVANTAGES



Factory sealed to provide integral surface protection from stains

22 7/16" x 37 3/8" x 2 3/8"
570 x 950 x 60mm

Refer to the Unilock Product Resource Guide for more Technical information and Product data information.



PRODUCT: Metro Slab™ - Limestone and Sandstone
PROJECT: Residence, ON

METRO SLAB™

CLASSIC



Limestone



Midnight Charcoal



Sandstone



15 x 30 x 2 3/8"
380 x 760 x 60mm

TECHNICAL ADVANTAGES

ClassicCoat

Factory sealed to protect surface texture and colour.

Consult the Unilock Product Resource Guide for more Technical information and Product data information.



PRODUCT: Promenade Plank Paver Slab - Opal Blend, Steel Grey Blend, Dark Charcoal
PROJECT: Kansas City University, Kansas City, MI

PROMENADE™ PLANK SLAB

ENDURACOLOR™



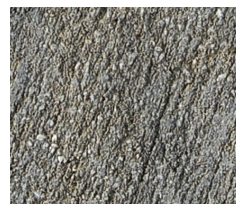
Opal Blend
(Smooth finish)



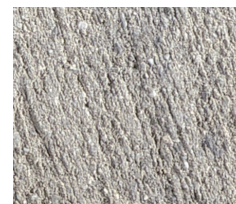
Steel Grey Blend
(smooth finish)



Dark Charcoal
(Il Campo finish)



Granite Blend
(Il Campo finish)



Light Grey
(Il Campo finish)



Black Granite
(Series finish)



8 x 24 x 4"
200 x 600 x 100mm

TECHNICAL ADVANTAGES

BRUSHED FINISH

Graphically interesting etched lines

SERIES FINISH

Granite, Quartz and Marble surface materials

Consult the *Unilock Product Resource Guide* for more *Technical information and Product data information.*



PRODUCT: Revela™ Slab - Mica Grey
PROJECT: Residential Backyard

REVELA™ SLAB

ENDURACOLOR™



Metallic Grey



Mica Grey



Pewter



Savannah



21 x 35 x 2 3/8"
540 x 890 x 60mm

TECHNICAL ADVANTAGES

Shotblasted surface for an enhanced surface appearance.

Consult the Unilock Product Resource Guide for more Technical information and Product data information.



PRODUCT: Richcliff - Dawn Mist with Copthorne
 -Basalt and Courtstone - Basalt accents
PROJECT: Residence, Mississauga, ON

RICHCLIFF® SLAB



Dawn Mist



Smoke Shale



12 x 36 x 2 3/4"
 300 x 900 x 70mm

TECHNICAL ADVANTAGES

REALA™

Cast from natural stone

ULTIMA™

Up to 4 times stronger than poured-in-place concrete

Consult the Unilock Product Resource Guide for more Technical information and Product data information.



PRODUCT: Skyline™ - Tuscany

PROJECT: Fuse. Cambridge, MA

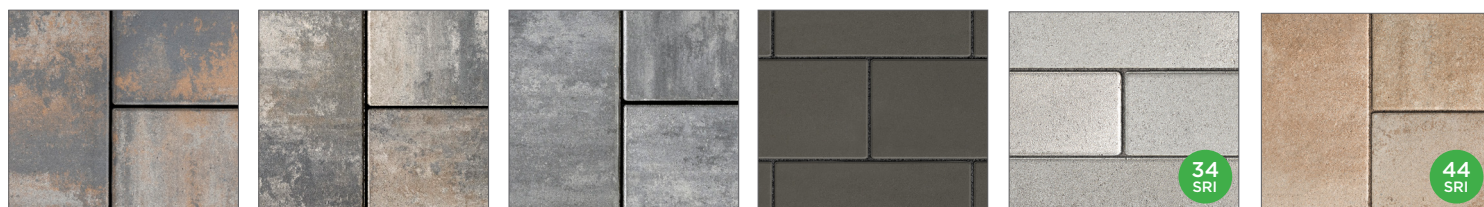
SKYLINE™ SLAB

ENDURACOLOR™

SMOOTH PREMIER FINISH SPECIAL ORDER

Ask about adding
EasyClean™

to the Skyline Smooth Premier Slab

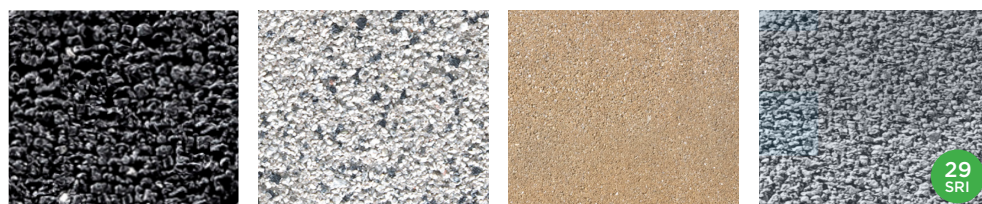


Almond Grove Fusion Fossil **NEW** Granite Mist Midnight Charcoal Opal Blend Tuscany



Sandstone Steel Grey Blend Cremo *Senzo™ Finish* Midnight Charcoal *Senzo™ Finish* MOCHA BROWN *Senzo™ Finish*

SERIES™ FINISH



Black Granite Glacier Golden Sand Mountain Mist

ENDURACOLOR™

UMBRIANO® FINISH SPECIAL ORDER

ENDURACOLOR™



French Grey (SRI 48) Grenada White (SRI 52) Midnight Sky Summer Wheat (SRI 48) Winter Marvel (SRI 38)



23 $\frac{3}{8}$ x 23 $\frac{3}{8}$ x 2"
600 x 600 x 50mm
Ideal for Pedestals



18 x 24 x 2"
450 x 600 x 50mm

Consult the Unilock Product Resource Guide for more Technical information and Product data information.
*Special Order, please contact your local Unilock Representative for availability and available custom options.
Skyline Collection 24" x 24" is special order; please contact your local Unilock Representative for availability and available special order options.



PRODUCT: Soreno™ Slab - Light Granite
 PROJECT: Residential Terrace

SORENO™ SLAB

ENDURACOLOR™



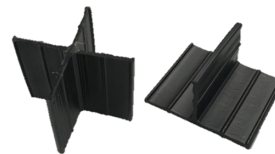
Light Granite



Toscana Beige



16 x 32 x 2"
 400 x 800 x 50mm



- X & T Slab Spacers**
- 250 per bag
 - X & T bagged separately
 - T spacers 2" x 1"
 - X spacers 2" x 2"

TECHNICAL ADVANTAGES



Factory sealed to provide integral surface protection from stains

Unilock recommends using slab spacers when installing Arcana on an open grade surface. "T" spacers are needed for running bond patterns. "X" spacers are needed for stack bond patterns. Please contact your Unilock Territory Manager for more information.

Consult the Unilock Product Resource Guide for more Technical information and Product data information.



PRODUCT: Umbriano - Midnight Sky
 PROJECT: 2950 N Sheridan, Chicago, IL

UMBRIANO® SLAB

ENDURACOLOR™



French Grey



Grenada White



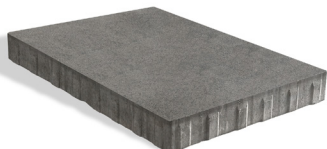
Midnight Sky
Only available in 8 x 24 x 70mm



Summer Wheat



Winter Marvel



21 x 35 x 2 3/8"
 540 x 890 x 60mm



8 x 24 x 2 3/4"
 200 x 600 x 70mm



12 x 24 x 2 3/4"
 300 x 600 x 70mm



24 x 24 x 2 3/4"
 600 x 600 x 70mm



18 x 36 x 4"
 450 x 900 x 100mm



36 x 36 x 4"
 900 x 900 x 100mm

TECHNICAL ADVANTAGES



Factory sealed to provide integral surface protection from stains

COLORFUSION™

Subtly mottled colour finish

Consult the Unilock Product Resource Guide for more Technical information and Product data information.



PRODUCT: Porcelain - Gotham Nero
PROJECT: 3033 N. Clark. Chicago, IL

PORCELAIN TILE

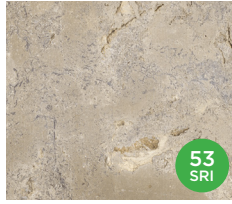
DELCONCA USA



Gotham Grey

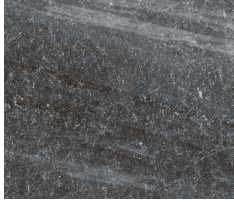


LaScala Grey



Travstone Noce

UNILOCK



Unilock Cosmic Grey



Unilock Dove Grey Travertine



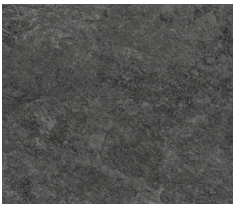
23 $\frac{3}{8}$ " x 23 $\frac{3}{8}$ " x $\frac{3}{4}$ "
600 x 600 x 20mm



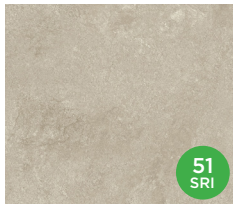
15 $\frac{3}{4}$ " x 31 $\frac{1}{2}$ " x $\frac{3}{4}$ "
400 x 800 x 20mm

LASCALA AND UNILOCK ONLY

DELCONCA ITALY



Lavaredo Antracite



Lavaredo Beige



Lavaredo Bianco



Lavaredo Grigio



Lavaredo Naturale



48 x 48 x $\frac{3}{4}$ "
120 x 120 x 20mm



24 x 36 x $\frac{3}{4}$ "
600 x 900 x 20mm



24 x 24 x $\frac{3}{4}$ "
600 x 600 x 20mm



PRODUCT: Umbriano Coping - Winter Marvel
 PROJECT: Residence, QC

UMBRIANO® COPING

ENDURACOLOR™



French Grey



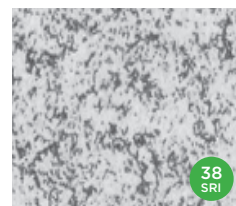
Grenada White **NEW**



Midnight Sky



Summer Wheat



Winter Marvel



CHAMFERED
 14 x 24 x 2³/₈"
 360 x 600 x 60mm



BULLNOSE
 14 x 24 x 2³/₈"
 360 x 600 x 60mm

TECHNICAL ADVANTAGES



Factory sealed to provide integral surface protection from stains

Consult the Unilock Product Resource Guide for more Technical information and Product data information.



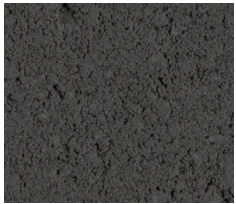
PRODUCT: Universal Coping - Light Grey
PROJECT: Residence, ON

UNIVERSAL® COPING

ENDURACOLOR™



Light Grey



Midnight Charcoal



Tan



14 x 19 x 2³/₄"
360 x 480 x 70mm

Consult the Unilock Product Resource Guide for more Technical information and Product data information.



PRODUCT: Canadian Granite - Blackridge
PROJECT: Residence, ON

CANADIAN GRANITE COPING

AVAILABLE WHILE QUANTITIES LAST



Blackridge



Deer Ridge

Coping is available in both Rock Face and Smooth.



4' LENGTH
 14 x 48 x 2"
 360 x 1200 x 50mm



6' LENGTH
 14 x 72 x 2"
 360 x 1830 x 50mm



PILLAR CAP
 28 x 28 x 2"
 700 x 700 x 50mm

Consult the Unilock Product Resource Guide for more Technical information and Product data information.

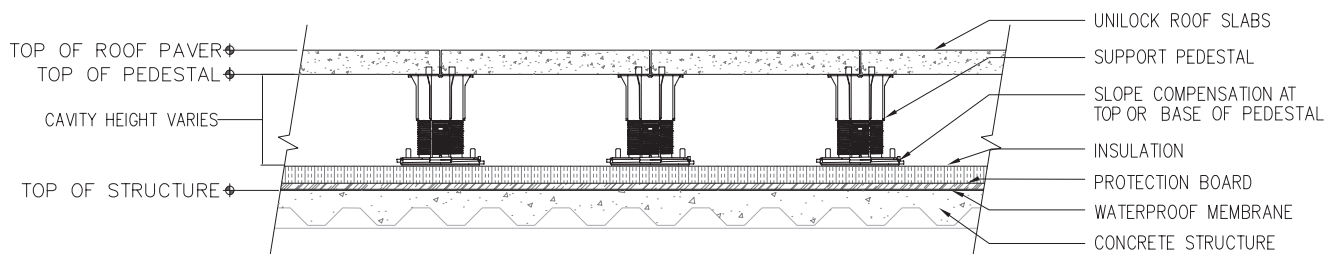
ROOF DECK INSTALLATION SYSTEMS

The cross sections below are examples of the type of installation system and technical features of Unilock products. Unilock shall not be deemed responsible for improper use of the product or of damage deriving from any use different from those recommended and/or installation procedures not in line with the following instructions relevant to a raised installation.

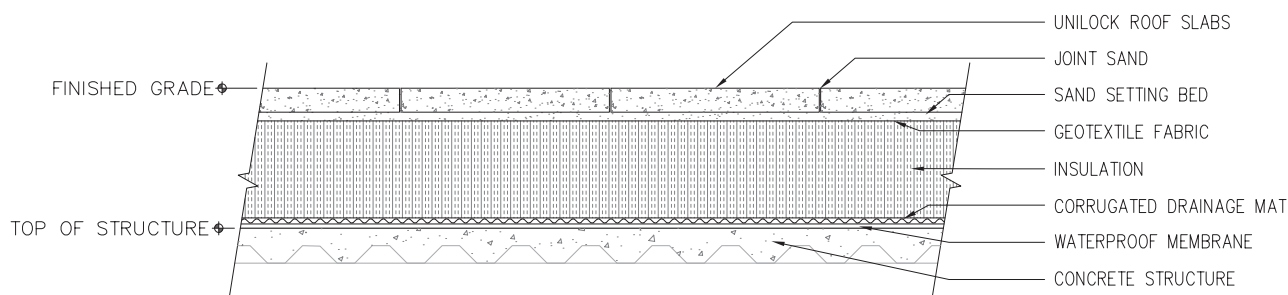
All roof top slab/pedestal installations must be engineered by a professional engineer.

PEDESTAL SYSTEM

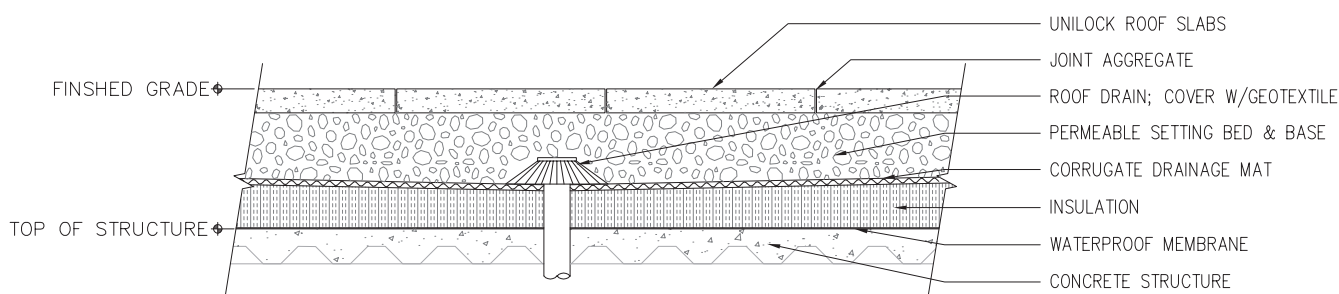
Unilock offers adjustable and stackable pedestal systems for your project. Contact your Unilock Representative to learn more. Specific installation details may vary based on pedestal height, load-bearing requirements, safety standards and wind-lift.



SAND SET WITH DRAINAGE MAT AND INSULATION

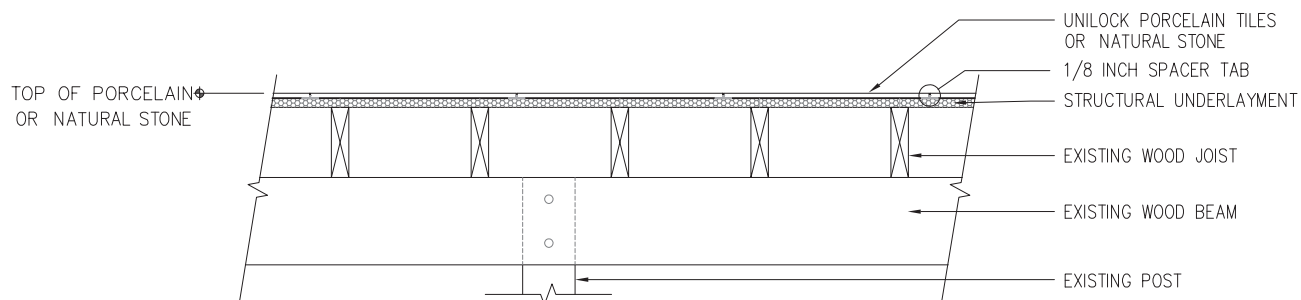


GRANULAR BASE SYSTEM



DECK RETROFIT SYSTEM

Unilock offers structural underlayment systems for your project. Contact your Unilock Representative to learn more.



Consult the Unilock Product Resource Guide for more Technical information and Product data information.



PRODUCT: Umbriano® - Winter Marvel and Il Campo® Granite Blend
PROJECT: One York, Toronto, ON



In 2019, U-Cara received the
"red dot" award for high design
quality and innovation.

reddot www.registration.pd.red-dot.de



U-CARA® MULTI-FACE WALL SYSTEM

The U-Cara Multi-Face Wall System lets you create one-of-a-kind walls and vertical hardscaping features with any design aesthetic. This two-component wall system, consisting of a structural base and interchangeable fascia panels, excels in strength, ease of installation, and design flexibility.

DESIGNING WITH U-CARA

STEP 1

CHOOSE YOUR U-CARA DESIGN PALETTE

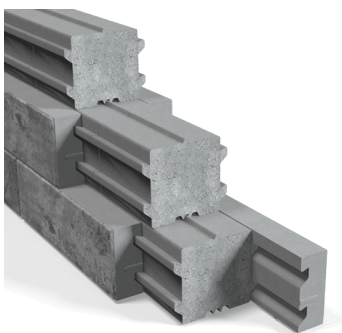
Select a color and surface texture for the exterior finishing panels.



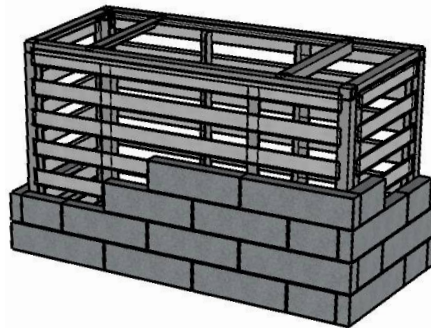
STEP 2

CHOOSE YOUR METHOD OF CONSTRUCTION

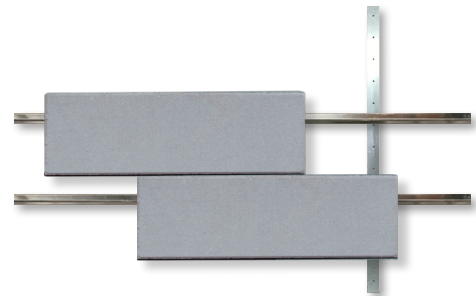
Select a structural component for your finishing panels. U-Cara panels easily slide onto the built-in tracks of the **Segmental Backer Block System**, **Prefabricated Modular System** or **Wall Mount System**.



SureTrack™ Backer Blocks



U-Cara Modular System



U-Cara Wall Mount System

STEP 3

CONSULT A UNILOCK REPRESENTATIVE FOR CROSS SECTIONS AND DESIGN DETAILS

Consult the Unilock Product Resource Guide for more Technical information and Product data information.

U-CARA® DESIGN PALETTE

U-Cara fascia panels are available in a variety of colors and textures, including **Unilock® EnduraColor finishes**, allowing for patterning, inlays, and texture changes. The versatility of panel options gives designers the ability to flex their creativity and extend patterning and finishes from groundwork to vertical.

UMBRIANO® FINISH



FRENCH GREY



GRENADA WHITE



MIDNIGHT SKY



SUMMER WHEAT



WINTER MARVEL

SERIES™ FINISH



BLACK GRANITE



ALSO AVAILABLE IN 3" PANEL

PITCHED FINISH



ALMOND GROVE FUSION



GRANITE MIST

SMOOTH PREMIER FINISH



ALMOND GROVE FUSION



FOSSIL



GRANITE MIST



OPAL BLEND



TUSCANY

Only available in Smooth Fascia panels

BUCINE BLUESTONE™ FINISH



BUCINE BLUESTONE

6" Panel for Standard & Closed end units

Consult the Unilock Product Resource Guide for more Technical information and Product data information.

TECHNICAL ADVANTAGES

ENDURACOLOR™

Refined surface and long-lasting color

COLORFUSION™ TECHNOLOGY

Subtly mottled color finish

TECHNICAL ADVANTAGES

ENDURACOLOR™

Refined surface and long-lasting color

Granite, Quartz and Marble surface materials.

TECHNICAL ADVANTAGES

ENDURACOLOR™

Refined surface and long-lasting color

TECHNICAL ADVANTAGES

ENDURACOLOR™

Refined surface and long-lasting color

U-CARA FASCIA PANELS

The standard size fascia panel is 6" x 18½". Closed-end corner units and half-size panels are sold as a separate bundle to facilitate automatic offset joints without cutting. Use these standard size panels alone or in combination with smaller 3" x 9¼" fascia panels, which are available in selected colors and finishes for accenting.



**6" STANDARD FASCIA
HALF PANEL**
6 x 18½ x 2⅜"
150 x 466 x 60mm



STANDARD FASCIA HALF PANEL
6 x 9¼ x 2⅜"
150 x 233 x 60mm



CLOSED-END FASCIA PANEL
6 x 21 x 2⅜"
150 x 540 x 60mm



3" FASCIA PANEL
3 x 9¼ x 2⅜"
75 x 233 x 60mm



6" FASCIA PANEL
6 x 9¼ x 2⅜"
150 x 233 x 60mm

2 UNIT CORNER BUNDLE



U-CARA® CONSTRUCTION OPTIONS

SURETRACK™ BACKER BLOCKS

U-Cara SureTrack backer blocks are segmental retaining wall units that create strong and dimensionally accurate structures for vertical landscape features. The backer blocks allow for structural and non-structural walls, single or double sided.



SURETRACK STANDARD BACKER

6 x 8 x 6"
150 x 200 x 150mm



SURETRACK LARGE BACKER

6 x 7 x 12"
150 x 175 x 300mm



U-GRIP™ BASE PAD

14 x 19 x 2"
355 x 482 x 55mm



SURE TRACK CORNER INSERT

L = 2" / 50mm
40 clips / bag

APPLICATIONS

- | Single-Sided Walls
- | Double-Sided Walls
- | Garden Walls & Steps
- | Fire Pits
- | Water Features
- | Engineered Walls

U-Cara fascia panels hang easily on the patented **SureTrack**® backer block.

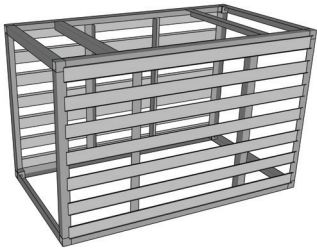


U-CARA CONSTRUCTION OPTIONS

U-CARA MODULAR SYSTEM

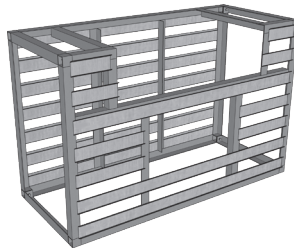
U-Cara is also available as a modular system for easy installation of grill islands, pillars and other free standing architectural features. The structural component of this system is made of prefabricated aluminum frames and the finished exterior is achieved by hanging the U-Cara fascia panels on the built-in tracks.

BASE MODULE



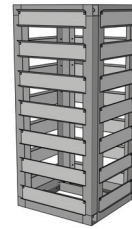
Fascia Panel Module Dimensions
32 1/2" x 69 1/2" (Outside to Outside)
Height 45" including coping

GRILL MODULE



Fascia Panel Module Dimensions
32 1/2" x 69 1/2" (Outside to Outside)
Height 45" including coping

PILLAR MODULE



Fascia Panel Module Dimensions
24" x 24" (Outside to Outside)
Height 45" including coping

APPLICATIONS

- | Standalone Bar Tables
- | Fire Tables
- | Grill Islands
- | Full Size Outdoor Kitchens
- | Barriers & Dividers
- | Planters

U-Cara fascia panels hang easily on the built-in tracks of the modular frame.



U-CARA® CONSTRUCTION OPTIONS

U-CARA WALL MOUNT SYSTEM

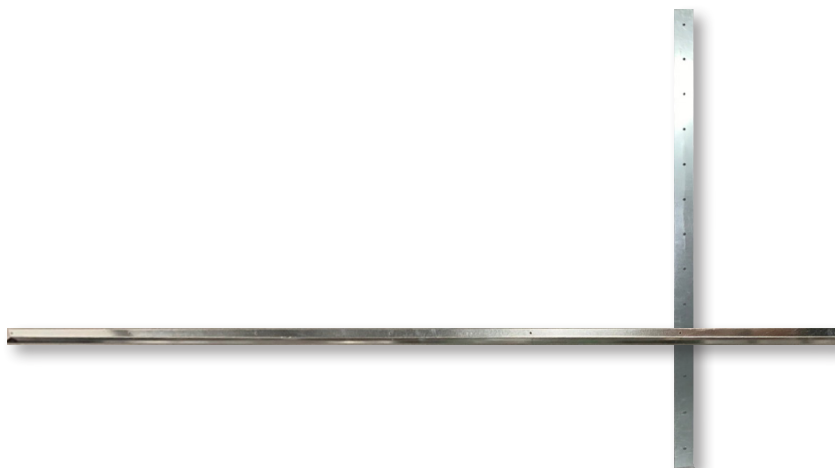
The U-Cara Wall Mount System is an adaptation of the wall system. The structural component of this system consists of galvanized steel alignment bars and rails. This system allows the U-Cara fascia panels to be mounted directly to substrate materials such as plywood or concrete.

VERTICAL ALIGNMENT BAR

38 5/8" tall
Eliminates the need to measure for panel spacing
Pre-Punched every 3" to accommodate both 3" & 6" panels
Installed 32" apart

HORIZONTAL RAIL

8ft long with pre-punched holes every 8"
Can be used on both concrete and wood substrates



APPLICATIONS

- | Wall Cladding
- | Integrated Landscape Features
- | Building Veneer
- | Aesthetic Foundation Coverings

U-Cara fascia panels hang easily on the rails.



BENEFITS OF USING U-CARA IN AMENITY DESIGNS

Enhance roof deck spaces with stunning and practical architectural features designed with U-Cara.

1. BUILT-IN ROOF DECK AMENITIES

Added amenities such as water features, fire pits, bar islands, grilling stations, outdoor kitchens, and community garden planters add to property value and can provide an elevated experience for building residents, whether in a multi-family, condominium or office setting. U-Cara Multi-Face Wall System and Modular System enable you to seamlessly integrate these elements into your designs.

2. PLACEMAKING ELEMENTS

U-Cara can be used to create barriers and dividers to define spaces that may serve different purposes, from relaxation and seating areas, to cooking stations, or play areas. It can also be used to carve out walkways guiding individuals through an outdoor space.

3. COORDINATION WITH UNILOCK PAVERS

The diversity of U-Cara fascia panels allow for seamless coordination of vertical hardscaping elements with corresponding Unilock paver finishes and colors.

WITH U-CARA,
THE ONLY LIMIT IS
YOUR IMAGINATION.

Contact a Unilock Representative for more information on designing roof decks with U-Cara.



ACCESSORIES

SANDS



ROMEX® EASY ECO-FINE

FEATURES: Ready-mixed, sustainable Jointing Mortar perfect for porcelain and sensitive surfaces, made from 98% natural, recycled, or renewable raw materials and produced with solar power. Easy application, highly water-permeable Jointing Mortar ideal for professionals and DIY homeowners that leaves a resin-film free finish. Resistant to ants, weeds and is pressure washer safe.

Three colours – Neutral, Stone Grey & Basalt.

Packaging – 12.5 kg bucket / 27.5 lb bucket
64 buckets per pallet

IDEAL FOR:

- Joint widths from 3mm (1/8th) on Porcelain Tile
- Joint widths from 5mm on Concrete Pavers
- Residential Patios & Pathways

Recommended for these Unilock products: Arcana Slab, Granite, Natural Stone Slabs, Porcelain Tile Slabs, Umbriano (Pedestrian application only), Umbriano Slab.

ROMEX® PURE PATIO

FEATURES: Resin film free Jointing Mortar suitable for residential patios and pathways. Highly water permeable resin jointing solution, specifically designed for the jointing of sensitive surfaces and coated concrete stone slabs. Resistant to ants, weeds, de-icing salt and is pressure washer safe.

Three colours – Neutral, Stone Grey & Basalt.

Packaging – 1kg can / 2.2lb cans (To be mixed with 55lb bag of ROMEX approved filler sand)
300 cans/skid

IDEAL FOR:

- Pedestrian applications
- Joint widths from 5mm (1/4")
- Residential Patios & Pathways

Recommended for these Unilock products: Beacon Hill Flagstone, Beacon Hill Smooth, Bristol Valley, Eco-Line (Pedestrian application only), Eco-Priora (Pedestrian application only), Eco-Promenade (Pedestrian application only), Granito, Richcliff (Pedestrian application only), Senzo (Pedestrian application only), Town Hall (Pedestrian application only), Treo Smooth (Pedestrian application only), Windermere Smooth (Pedestrian application only), Beacon Hill Smooth Slab, Revela Slab, Richcliff Slab.

ROMEX® FUGENSAND JOINTING SAND

FEATURES: Solid Jointing Sand with self repairing properties manufactured from natural, raw materials. Quick application and suitable for all load classes. No cement haze/residue due to natural polymer binder. Must be used in combination with Romex D7000 Joint Strengthener & Surface Sealer.

Three colours – Neutral, Stone Grey & Basalt.

Packaging: 55 lb bags / 25 kg bags
40 bags / skid

IDEAL FOR:

- Joint widths from 1 - 5 mm (1/16" - 1/4")
- Tightly laid or interlocking pavers
- Patios, Walkways, Driveways, Public spaces

Recommended for these Unilock products: Artline, Bronte Street Paver, Brussels Block, Copthorne, Double Holland, Hollandstone, Il Campo, Mattoni, Metro Slab, Northshore, Optiloc, Promenade Plank Paver, Promenade Plank Slab, Revela, Senzo, Series, Soreno Slab, Umbriano 70mm (Vehicular), Windermere Flagstone.

ROMEX® D7000 JOINT STRENGTHENER & SURFACE SEALER

FEATURES: All-in-One, Eco-friendly Jointing Sand Stabiliser and Surface Sealer. Easy topical application that protects against wash out, weed growth and allows for light surface pressure washing once cured. Sealing properties protect the surface from dirt, oil and corrosion from climate exposure and de-icing salt. Must be used with Romex Fugensand Jointing sand.

Packaging: 1L / 5 gallon
48 units of 5 gallon per pallet

IDEAL FOR:

- Joint widths from 1mm (1/16")
- Unbonded construction
- Patios, Walkways, Driveways, Public spaces

Recommended for these Unilock products: Artline, Bronte Street Paver, Brussels Block, Copthorne, Double Holland, Hollandstone, Il Campo, Mattoni, Metro Slab, Northshore, Optiloc, Promenade Plank Paver, Promenade Plank Slab, Revela, Senzo, Series, Soreno Slab, Umbriano 70mm (Vehicular), Windermere Flagstone.

ROMEX® FLEX JOINT JOINTING SAND

FEATURES: Viscous elastic jointing mortar made of select sands and rubber. Suitable for vehicular rated and unbonded surfaces. Water permeable, self compacting and water emulsifiable during installation. Medium to heavy traffic up to 25 T.

Three colours – Neutral, Stone Grey & Basalt.

Packaging: 25 kg bucket / 55 lb bucket
24 buckets / skid

IDEAL FOR:

- Unbonded Construction Methods
- Joint widths from 8mm (3/8") – Narrower joints can be jointed with increased work.
- Medium to Heavy Traffic up to 25 T

Recommended for these Unilock products: Courtstone, DuraFlow, Eco-Optiloc, Richcliff Random bundle (Vehicular application)



ACCESSORIES

SANDS



ROMEX® FLEX JOINT JOINTING SAND

FEATURES: Viscous elastic jointing mortar made of select sands and rubber. Suitable for vehicular rated and unbonded surfaces. Water permeable, self compacting and water emulsifiable during installation. Medium to heavy traffic up to 25 T.

Three colours - Neutral, Stone Grey & Basalt.

Packaging: 25 kg bucket / 55 lb bucket
24 buckets / skid

IDEAL FOR:

- Unbonded Construction Methods
- Joint widths from 8mm (3/8") - Narrower joints can be jointed with increased work.
- Medium to Heavy Traffic up to 25 T

Recommended for these Unilock products: Courtstone, DuraFlow, Eco-Optiloc, Richcliff Random bundle (Vehicular application)



ALLIANCE GATOR G2 Maxx Sand (Intelligent Polymeric Sand) - FOR JOINTS UP TO 4" MAXIMUM

FEATURES: Setting time - 15 minutes; sets above 32° F/0° C, can be applied even if rain is expected (min. 1 hr.)

Dust free and haze free. No blower is needed, requires only one watering.

Four colours - Beige, Grey, Black and Ivory.

Packaging - 50lb bags / 22.7 kg bags; 70 bags/skid

IDEAL FOR:

- Residential & Commercial applications
- Concrete paver, wet cast products
- Sloping areas, pool surroundings, patios, walkways, driveways and more



ARDEX X 32™ MICROTEC® - FOR JOINTS UP TO 1¼" (32mm) MAXIMUM- THICK BED

FEATURES: Setting time - 3 hours; ideal for use with moisture-sensitive stone, virtually eliminates staining, warping and discoloration. Water repellent- for fast track swimming pool and wet area applications. Ideal for heavy and large format tiles. The ultimate mortar for interior and exterior stone applications. Excellent slump resistance for floors. Easy to mix and apply; mixes using just water.

Two Colours: Grey and White

Packaging - 40 lb bags / 18 kg bags

IDEAL FOR:

- Residential applications
- Natural Stone, Porcelain, Granite
- Pool surroundings, patios, walkways, roof decks and more



ARDEX X 90 OUTDOOR™ - FOR JOINTS UP TO 1¼" (32mm) MAXIMUM- THIN BED

FEATURES: Setting time - 3 hours; ideal for use with moisture-sensitive stone. Highest levels of freeze-thaw resistance. Maximum efflorescence resistance. Ideal for tiling on concrete balconies, patios, swimming pools and high-load commercial areas. Outstanding rapid-setting properties, even at temperatures as low as 40F /5C. Excellent for exterior and interior floors and walls. Heavy and driving rain-resistant after only 2 hours.

One Colour: Grey

Packaging - 40 lb bags / 18 kg bags

IDEAL FOR:

- Residential & Commercial applications
- Natural Stone, Porcelain, Granite
- Pool surroundings, patios, walkways, roof decks and more



UNICARE™ NATURAL STONE MATTE SEALER

1L and 5L

For Porous Stones - Natural Stone only

- No change of color
- No surface coating, sheen or shine at all
- Riven Sandstone & Smooth Sandstone

Note: Carefully read all instructions and safety information on product label prior to application. For additional safety information, see MSDS. Coverage: 6 M²/L depending on dilution.



UNICARE™ NATURAL STONE COLOUR ENHANCER SEALER

1L and 5L

Color Enhancement For Porous Stones (for Natural Stone only)

- No surface coating, sheen or shine
- Breathable
- Lasts several years
- Easy to apply

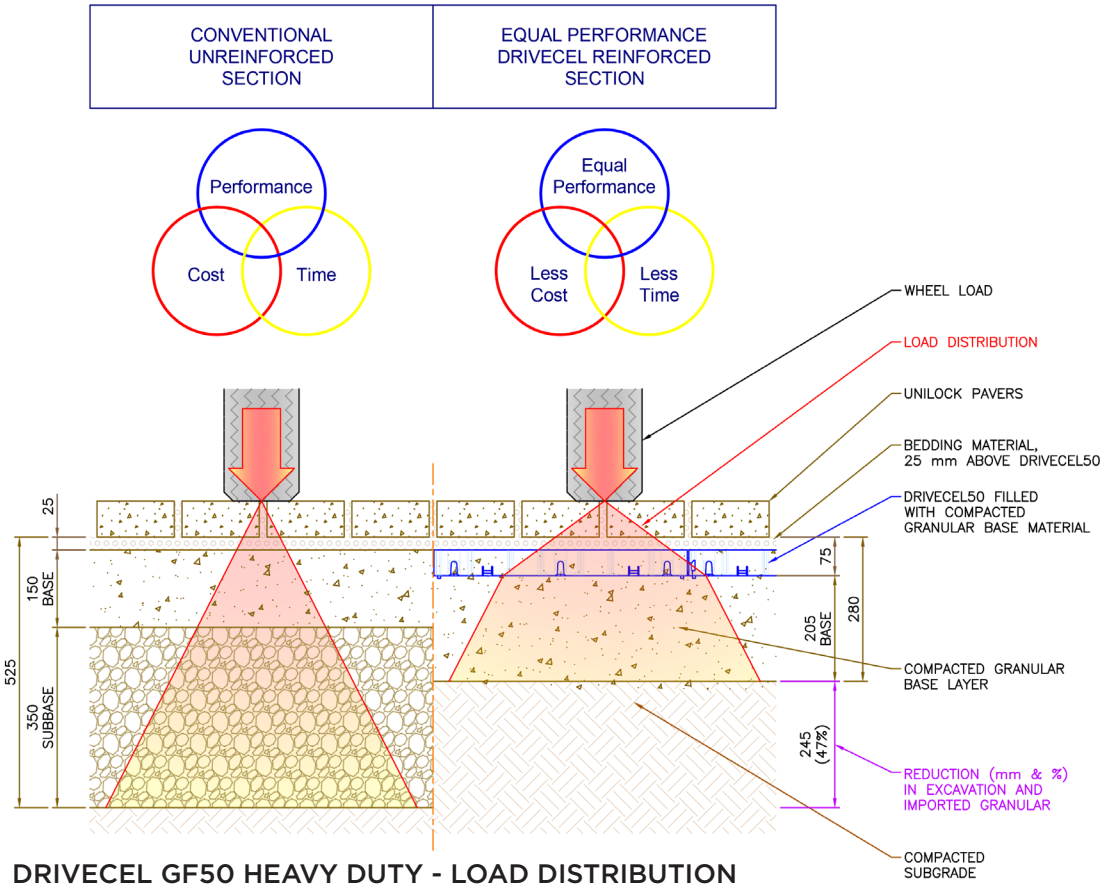
Note: Carefully read all instructions and safety information on product label prior to application. For additional safety information, see MSDS. Coverage: 6 M²/L depending on dilution.



ALLIANCE GATOR NATURAL STONE FINISH + COLOR ENHANCER - ZERO GLOSS

Gator Seal for Natural Stone is made of silicone based polymers. This sealer penetrates deep into the natural stone thus reducing the oil and dirt penetration, as well as protecting them from the corrosion of de-icing salt. Approximate coverage 200 - 400 sq. ft. per gallon, depending on stone porosity and other factors. Available in 1 gal. & 5 gal.; 4 units of 1 gal./case, 24 cases/pallet; 48 units of 5 gal./pallet.

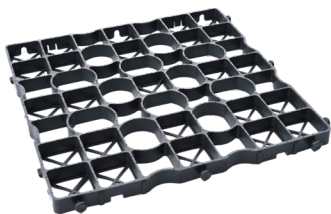
Note: Carefully read all instructions and safety information on product label prior to application. For additional safety information, see MSDS.



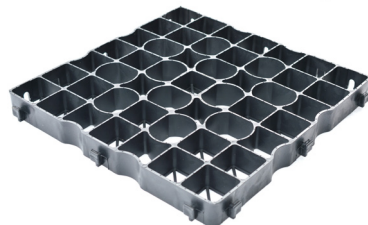
PRODUCT ATTRIBUTES

Structure	A Stiff, geocellular confinement system for soil reinforcement and load distribution.
Material	Made of 100% recycled low density polyethylene (LDPE) plastic. Stiff, yet flexible, even at low temperatures (does not become brittle). Long lasting, durable and environmentally friendly. Resistant to biological, chemical and UV degradation.
Performance	Creates a revolutionary Reinforced Soil Structure (RSS) with high tensile and compressive strength to maximize the performance of pavement structures. Extremely permeable; great for permeable pavements. 10 year product guarantee.
Construction	Lightweight and easy to handle. Simple and quick installation. Allows for easy repairs / adjustments after installation.

PRODUCT SPECIFICATIONS



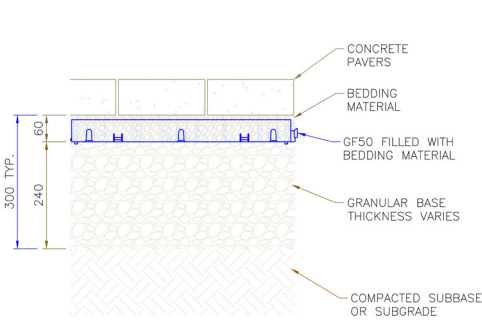
DRIVECEL30 LIGHT DUTY
20 x 20 x 1.2"
500 x 500 x 30mm



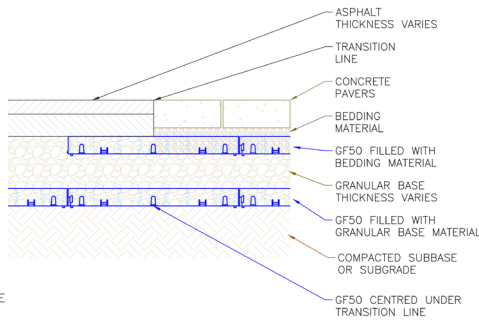
DRIVECEL50 HEAVY DUTY
20 x 20 x 2"
500 x 500 x 50mm

TYPICAL APPLICATIONS

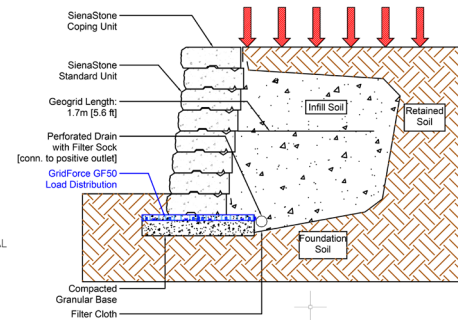
PAVEMENT STRUCTURES



TRANSITIONS



WALL LEVELLING PADS



TECHNICAL INFORMATION

Conforms to:

- DIN 38412 - Neutral for the environment, lifespan higher than 10 years
- DIN 4102 - Approval emergency access routes, fire resistance
- DIN 1072 - Approval for 20 tonne axle load, driveways, road extensions, bridges
- DIN IN ISO 124 and B125 - Approval for car parks, access roads & storage areas

Maximum Load Capacity = 1,000 tonnes / m² (filled)
 Temperature Range = -35°C to 85°C (-31°F to 185 °F)
 Tile Wall Thickness = 3 mm (for GF50, GF40 & GF30)
 Performance Design Life = >100 years

ENVIRONMENTAL INFORMATION

- Made from 100% recycled plastic
- Recyclable
- Neutral for the environment

APPLICATIONS

Pavement Structure Reinforcement

Under pavers, on subgrade for improvement, multi-layers for maximum performance and durability, conventional and permeable pavements, driveways, patios, walkways, pool decks, roof decks, over parking garages, trails and paths.

Pavement Transitions

Pavers to asphalt, pavers to concrete, driveways to garage, around catch basins and maintenance holes, over culverts.

Access Roads

Emergency and fire access, temporary construction access, grassed permeable pavers.

Foundation Support

Retaining wall levelling pads, outdoor kitchens, barbecues and fireplaces.

Low Impact Development (LID)

Permeable pavers with water storage in the pavement structure.

TECHNICAL SPECIFICATIONS

Material	Recycled Polypropylene
Height Range	30mm to 420mm
Ultimate Compressive Strength¹	T Series - 10 kN (2,360 lbs)*
Base Diameter	T Series - 177 mm
Spacer Tab Height	11 mm
Spacer Tab Thickness	13 mm [gap between pavers]
Biological / Chemical	Unaffected by molds and algae
Resistance	Good resistance to alkali and bitumen

¹Detailed values for individual heights are given in the technical specification

PEDESTAL ASSEMBLY

ELEMENTS

Gap spacers

Gap spacers create spaces between paver tiles with 3 mm width.

Screw

Units have graduating heights.

Adjustment ring for height regulation

Adjustment ring allows easy and smooth pedestal height adjustment.

Base

Wide pedestal base for better support. Bases have different heights depending on unit.

OPTIONAL ACCESSORIES

Rubber shim

Noise reduction shim. Can also be divided into parts.

Self levelling head

Self levelling head automatically reduces surface slope up to 7%.

Height coupler (use up to 2)

Additional Height couplers can be added to increase pedestal height.



STANDARD PEDESTALS



DDP 030-045 MM



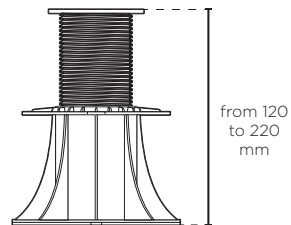
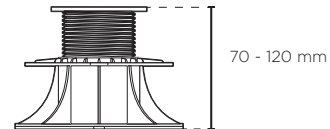
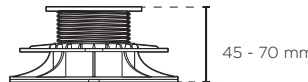
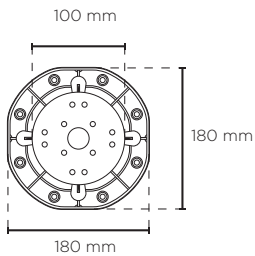
DDP 045-070 MM



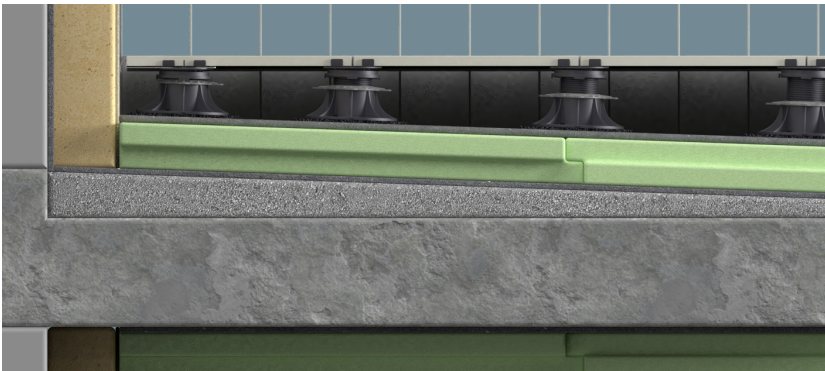
DDP 070-120 MM



DDP 120-220 MM













*Unilock stocks Standard Pedestals only. MAX Pedestals available through special order



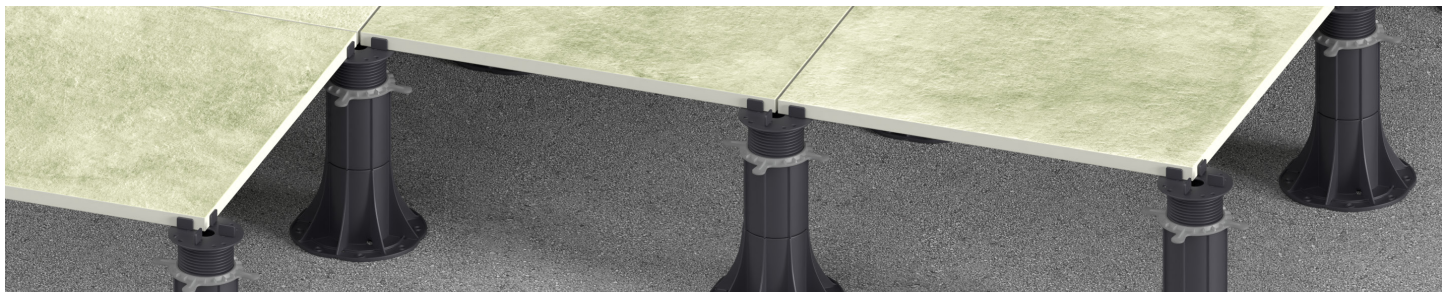
Consult the 2022 Unilock Product Resource Guide for more Technical information and Product data information.

PRODUCT TABLE

Terraces elevated

Model #	Name	Height	Weight (kg)	Box	Pallet	Ultimate Compressive Strength (lbs)	Design Compressive Strength (FS:2 lbs)
 DDP 030-045 MM	Adjustable Pedestal	30 - 45 mm	0.14	100	2,000	3,250 lbs.	1,625 lbs.
 DDP 045-070 MM	Adjustable Pedestal	45 - 70 mm	0.17	70	1,400	3,250 lbs.	1,625 lbs.
 DDP 070-120 MM	Adjustable Pedestal	70 - 120 mm	0.23	50	1,000	3,250 lbs.	1,625 lbs.
 DDP 120-220 MM	Adjustable Pedestal	120 - 220 mm	0.4	36	720	3,250 lbs.	1,625 lbs.
 DS 100 MM	Height Coupler	100 mm	0.12	100	2,000		
 DDP LE	Self Levelling Head 7% Standard	16 mm	0.1	250	5,000		
 SH 100 1.5 MM	Rubber Shim	1.5 mm	0.02	1,000	-		
 L3 / L5	Spare Gap Spacers 3/5 mm (100 pcs)	3-11 mm 5-15 mm		100			
 K3 / K5	Cross Spacer	3 mm		1			
	Screwdriver Pedestal Assembly and Height Regulation Tool		0.02	1	-		

Each box of pedestal comes with (1) cross spacer per pedestal and individual 3mm and 5mm gap spacers for 20% of the pedestals.



Note: The information provided in this brochure is based on current knowledge and experience and does not infer any legally binding assurance or warranty, expressed or implied. Intending purchasers should verify whether any changes to specifications or applications or otherwise have been made since the issue of this literature. Environmentally-friendly recycled materials are used in product manufacture wherever possible. Physical product properties including color may differ due to source of raw materials used. Color may also fade due to UV exposure. All components of the product are designed for specific application, design calculations and any variation and/or deviation therefrom shall be the responsibility of the specifier and/or user.

Consult the Unilock Product Resource Guide for more Technical information and Product data information.

UNILOCK®

DESIGNED TO CONNECT.

UNILOCK.COM | 1-800-UNILOCK

BOSTON (508) 278-4536	BUFFALO (716) 822-6074	CHICAGO (630) 892-9191	KANSAS CITY (913) 417-7985
CLEVELAND (330) 927-4000	DETROIT (248) 437-7037	MILWAUKEE (262) 742-3890	NEW YORK (845) 278-6700
MID-ATLANTIC (202) 798-2060	TORONTO (416) 646-9000		

©2019 Hengestone Holdings, Inc.

COVER PHOTO: PRODUCT: Skyline™ - New York Blend in Smooth Premier Finish
PROJECT: 99 Tremont @ Oak Square, Brighton, MA DESIGNER: Radner Design Associates, Inc.

