

# ARCHITECTURAL SLABS FOR ROOF DECK SYSTEMS

TECHNICAL GUIDE



**UNILOCK**  
DESIGNED TO CONNECT.



**PRODUCT:** Umbriano® - Winter Marvel, French Grey, Midnight Sky  
**PROJECT:** City Square Parking Garage Roof Deck, Worcester, MA  
**DESIGNER:** CBA Landscape Architects LLC



# ROOF DECK SYSTEMS

Unilock® offers a wide variety of textures and finishes that complement any pedestal paver system or roof deck application. Roof deck hardscape systems act to protect the roof from the elements while providing additional usable space for gathering and entertaining in a unique outdoor setting.

With the many color, finish and size options available from Unilock, we will make your vision come to life.

- 3** Roof Deck Systems
- 4** Urban Terraces
- 5** Commercial Projects
- 6** General Overview
- 7** Quality Assurance
- 8** Large Format Pavers & Slabs
- 17** Natural Stone
- 19** Porcelain Tile
- 20** Wall Options
- 30** Wall Coping Options
- 32** Roof Deck Installation Systems



**PRODUCT:** Porcelain - Davinci Birch and Gotham Nero  
**PROJECT:** The Residences at 1111 Beacon St. Brookline, MA  
**DESIGNER:** Warner Larson Group

## URBAN TERRACES

In an urban environment, even the tiniest outdoor oasis can serve as a reprieve from bustling surroundings. However, tight lots can present a design challenge. Roof deck applications allow for more usage of space by providing functionality in an area that is often overlooked.

Unilock architectural slabs and retaining walls come in a wide selection of shapes, textures and colors designed to deliver high aesthetic impact and maximum function in hardscapes that are designed to complement their organic counterparts.



**PRODUCT:** Umbriano® Winter Marvel  
**PROJECT:** One Old Mill, Toronto, ON  
**DESIGNER:** Janet Rosenberg & Studio

## COMMERCIAL PROJECTS

Roof deck applications let you capitalize on previously unusable space to create a functional outdoor amenity area. The installation technologies behind suitable pavers for rooftops and pedestal systems are transforming elevated and sloped roof surfaces into outdoor amenities that are not only functional but aesthetically beautiful.

Transform existing unused roof spaces into functional outdoor amenity areas with Unilock products.

# GENERAL OVERVIEW

The full line of Unilock architectural roof deck slabs, pavers, natural stone slabs and porcelain tile offer many different finish and color options. Continue design themes from on-grade to rooftop applications creating a harmonious project between building site paving and outdoor spaces.

Unilock architectural slabs are offered in six thicknesses and range from 9 lbs/sqft to 48 lbs/sqft for various roof structural weight limits.



## SOLAR REFLECTANCE

Solar Reflectance Index (SRI) is a criterion used by USGBC that measures values of sunlight and reflectance from built surfaces. It is used to measure urban heat island effects in city centers. Dark pavement absorbs heat during the day and then releases it at night. This process creates a situation that causes urban centers to stay warmer all the time which contributes to air pollution and increased energy consumption. Careful selection of materials and colors can help reduce urban heat island effects.

Potential LEED® credits are available for products with an SRI greater than 33. Look for SRI values beside the color name within our product selection, where applicable.

## ARCHITECTURAL SLAB OPTIONS

Measurements shown in this catalog are meant for pedestal applications. The dimensions shown are taken from the side of the paver to the side of the paver. Consult your regional Product Data Resource Guide for locally stocked colors.

THICKNESS	PRODUCT TYPES	SHAPE	PRODUCT WEIGHTS
2cm	Porcelain Tile	600 x 600mm 400 x 800mm	9 lbs/sq.ft.
2.2cm	Natural Stone	600 x 900mm 600 x 600mm 450 x 600mm 300 x 600mm	11 lbs/sq.ft.
5cm	+ Skyline™	606 x 606mm	24lbs/sq.ft.
6cm	Beacon Hill™ XL	900 x 540mm** 720 x 540mm**	27.5/sq.ft.
7cm	Umbriano® + Series™ + Il Campo® + Smooth Premier Finish	600 x 600mm 400 x 400mm 300 x 600mm	33 lbs/sq.ft.
10cm	+ Umbriano® + Series™ + Il Campo® + Smooth Premier Finish	600 x 600mm 400 x 400mm 300 x 600mm	48 lbs/sq.ft.

+ Special order only (verify locally manufactured finishes with your Unilock® Representative). \*\*Available in select markets. All sizes are nominal, please refer to finish page for actual face dimensions to establish grid spacing. Additional shapes are available, please contact your local Unilock Representative for more information.

# QUALITY ASSURED

Unilock manufacturing teams have an unrelenting commitment to shipping only top quality products. Our world-class production facilities are renowned for their safety and cleanliness and are staffed with the most experienced production people in the industry. Our continual investment in the most technologically advanced equipment ensures we're able to provide the best in product quality, consistency and style.



## UNILOCK PRODUCTS ARE

- | Tested from raw materials to finished product
- | Tested hourly for product density
- | Designed to meet all dimensional tolerances
- | Inspected by dedicated quality control staff
- | Meet and exceed industry quality standards (ASTM & CSA)
- | Durable and slip-resistant
- | Made with colorfast pigments
- | Resistant to salt erosion and chlorine

## TESTING SPECIFICATIONS

Unilock architectural roof deck slabs, natural stone and porcelain tile have been manufactured and quarried to meet and exceed ASTM and CSA standards. Contact your Unilock Representative for specific product results.

UNILOCK CONCRETE SLAB - MINIMUM STANDARDS					
Thickness	ASTM C140 Compressive Strength	ASTM C140 Water Absorption	ASTM C1645 Freeze/Thaw*	ASTM C1782 Flexural Strength	CSA 231.1 Flexural Strength
1¾"	8,500 PSI MIN.	5% MAX	<500 G/M2	>725 PSI AV.	>650 PSI MIN.
2"	8,500 PSI MIN.	5% MAX	<500 G/M2	>725 PSI AV.	>650 PSI MIN.
2¾"	8,500 PSI MIN.	5% MAX	<500 G/M2	>725 PSI AV.	>650 PSI MIN.
4"	8,500 PSI MIN.	5% MAX	<500 G/M2	>725 PSI AV.	>650 PSI MIN.

\* Results after 49 cycles

UNILOCK NATURAL SANDSTONE & LIMESTONE - UNILOCK TESTED (MINIMUM STANDARDS)			
Thickness	ASTM C170 Compressive Strength*	ASTM C97 Water Absorption by weight	ASTM C99 Flexural Strength*
¾"	>25,000 (4,000 MIN.) PSI	<1.4% (3-12% MAX.- LIMESTONE) <0.2% (3-8% MAX.- SANDSTONE)	(350 PSI MIN.)

\* Tested dry

UNILOCK PORCELAIN TILE - MINIMUM STANDARDS				
Thickness	ASTM C373 Water Absorption	ASTM C1026 Freeze/Thaw	ASTM C648 Breaking Strength	ANSI 137.1 Slip Resistance
¾"	-0.1%	Resistant	≥ 3400 LBS	≥ 0.60

ASTM - American Society of Testing and Materials    CSA - Canadian Standards Association    ANSI - American National Standards Institute



# ARCANA

ENDURACOLOR™



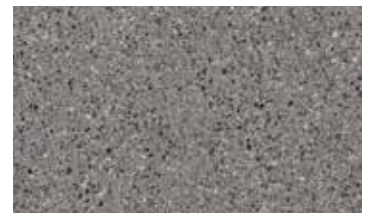
Lugano (SRI 53)



Modena (SRI 53)



Corvara (SRI 34)



Vivanto



23 $\frac{3}{8}$  x 23 $\frac{3}{8}$  x 2"  
606 x 606 x 50mm

*Ideal for Pedestals*



17 $\frac{1}{8}$  x 23 $\frac{3}{8}$  x 2"  
453.5 x 606 x 50mm



11 $\frac{1}{8}$  x 23 $\frac{3}{8}$  x 2"  
301 x 606 x 50mm

## TECHNICAL ADVANTAGES

### EASYSOFT™ STAIN RESISTANCE

Factory sealed to provide integral surface protection from stains





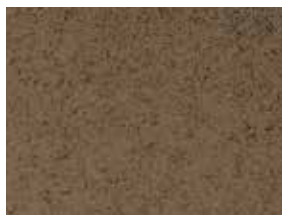
PRODUCT: Umbriano - Winter Marvel  
 PROJECT: 1035 W VanBuren, Chicago, IL  
 DESIGNER: site | site design group, ltd.

# UMBRIANO®

ENDURACOLOR™



Summer Wheat (SRI 48)



Harvest Brown



French Grey



Winter Marvel (SRI 38)



Midnight Sky



Skyline™ Umbriano  
 23½ x 23½ x 2" \*  
 606 x 606 x 50mm\*  
*Ideal for Pedestals*



Skyline Umbriano  
 23½ x 23½ x 2" \*  
 600 x 600 x 50mm\*



23½ x 23½ x 2¾ or 4" \*  
 600 x 600 x 70 or 100mm\*



15½ x 15½ x 2¾ or 4" \*  
 400 x 400 x 70 or 100mm\*



11½ x 23½ x 2¾ or 4" \*  
 300 x 600 x 70 or 100mm\*

## TECHNICAL ADVANTAGES

### EASYSOFT™ STAIN RESISTANCE

Factory sealed to provide integral surface protection from stains

### COLORFUSION™ TECHNOLOGY

Subtly mottled color finish

Consult your regional Product Data Resource Guide for locally stocked colors. Additional Special Order colors available.  
 \*Special Order, please contact your local Unilock Representative for availability and available custom options.



**PRODUCT:** Skyline™ - Tuscany  
**PROJECT:** Fuse, Cambridge, MA  
**DESIGNER:** Halvorson Design Partnership, Inc.

# SKYLINE™ SLAB

## SMOOTH PREMIER FINISH SPECIAL ORDER

**ENDURACOLOR™**

Ask about adding  
**EASYCLEAN™ STAIN RESISTANCE**  
to the Skyline Smooth Premier Slab



Light Buff\*



Medium Grey\*

\*Stock in select regions



White



Natural



Charcoal



Sandstone



Caramel  
SS0076



Muted Brown  
SS0075



Brown

## SERIES™ FINISH SPECIAL ORDER

**ENDURACOLOR™**



Black Granite



Crystalline Basalt



Crystal Rose



Golden Tan  
(SRI 45)



Ice Grey  
(SRI 38)



Mineral Ice Grey  
(SRI 33)



Mocha Brown

## UMBRIANO® FINISH SPECIAL ORDER

**ENDURACOLOR™**



Summer Wheat  
(SRI 48)



Autumn Sunset  
(SRI 32)



Harvest Brown



Grenada White  
(SRI 52)



Winter Marvel  
(SRI 38)



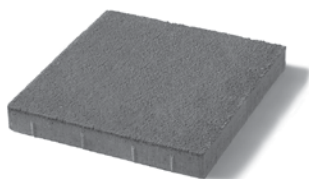
French Grey



Midnight Sky



Summer Rose



23<sup>3</sup>/<sub>8</sub> x 23<sup>3</sup>/<sub>8</sub> x 2"  
606 x 606 x 50mm  
*Ideal for Pedestals*



**PRODUCT:** Skyline™ - Series™ finish - Mineral Ice Grey  
**PROJECT:** Kemper Lakes Business Center, Lake Zurich, IL  
**DESIGNER:** BrightView Landscapes, LLC

# SERIES™

**ENDURACOLOR™**



Black Granite



Crystalline Basalt



Crystal Rose



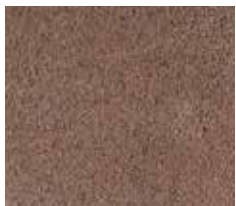
Golden Tan (SRI 45)



Ice Grey (SRI 38)



Mineral Ice Grey (SRI 33)



Mocha Brown - Chicago



Mocha Brown - New York



Mountain Mist (SRI 29)



Onyx Black



Peppered Granite (SRI 42)

## TECHNICAL ADVANTAGES

Granite, Quartz and Marble surface materials.



Skyline™ Series  
 23 $\frac{7}{8}$  x 23 $\frac{7}{8}$  x 2"  
 606 x 606 x 50mm  
*Ideal for Pedestals*



23 $\frac{1}{2}$  x 23 $\frac{1}{2}$  x 2 $\frac{3}{4}$  or 4"  
 600 x 600 x 70 or 100mm



11 $\frac{1}{16}$  x 23 $\frac{1}{2}$  x 2 $\frac{3}{4}$  or 4"  
 300 x 600 x 70 or 100mm



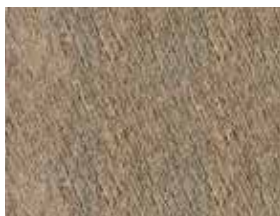
**PRODUCT:** Il Campo - Granite Blend  
**PROJECT:** Cornell Community Centre, Markham, ON  
**DESIGNER:** The MBTW Group

# IL CAMPO®

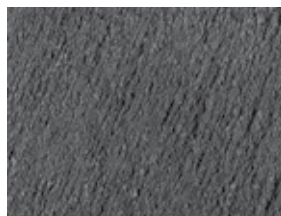
**ENDURACOLOR™**



Bavarian Blend



Coffee Creek



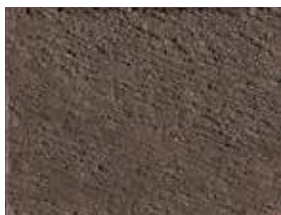
Dark Charcoal



Granite Blend



Heritage Brown



Mocha



Oakwood



River



Santa Fe



Sierra



23½ x 23½ x 2¾ or 4"  
 600 x 600 x 70 or 100mm

## TECHNICAL ADVANTAGES

### BRUSHED FINISH

Graphically interesting etched lines

Consult your regional Product Data Resource Guide for locally stocked colors. Additional Special Order colors available.  
 Il Campo 24 x 24" is special order; please contact your local Unilock Representative for availability and available custom options.



PRODUCT: Beacon Hill XL - Opal  
PROJECT: Private Residence

# BEACON HILL™ FLAGSTONE XL

ENDURACOLOR™



Almond Grove



Alpine Grey



Bavarian



Birch



Coffee Creek



Fossil



New York Blend



Platinum



River



Sierra



Slate Blue



Steel Mountain



Sycamore



Tuscany



Walnut

# BEACON HILL™ SMOOTH XL

ENDURACOLOR™



Bavarian



Copper Ridge



Fossil



Granite Fusion



Opal Blend



Sierra



Steel Grey



Steel Mountain



Tuscany



XL Rectangle (USA)  
21 x 35 x 2 3/8"  
540 x 900 x 60mm



XL Rectangle (CDN)  
21 x 28 x 2 3/8"  
540 x 720 x 60mm



**PRODUCT:** Rivenstone - Bluestone  
**PROJECT:** Central Park Zoo, Manhattan, NY  
**DESIGNER:** Central Park Zoo

# RIVENSTONE™

STONEMARK™



Bluestone



Canyon



Sahara



23½ x 30 x 1¾"  
 600 x 760 x 45mm



23½ x 23½ x 1¾"  
 600 x 600 x 45mm



17½ x 23½ x 1¾"  
 450 x 600 x 45mm



11½ x 23½ x 1¾"  
 300 x 600 x 45mm

## TECHNICAL ADVANTAGES

### REALA™ TECHNOLOGY

Cast from historic brick, cobble and stone





**PRODUCT:** Natural Stone - Indian Coast  
**PROJECT:** The Regatta, Toronto, ON  
**DESIGNER:** Private Residence

# NATURAL STONE



**Autumn Harvest (SRI 33)**  
 Sandstone  
 Natural Cleft Edge



**Indian Coast (SRI 55)**  
 Sandstone  
 Sawn Edge



**Stone Cliff Grey (SRI 28)**  
 Sandstone  
 Natural Cleft Edge



23 $\frac{3}{8}$  x 35 $\frac{1}{2}$  x  $\frac{7}{8}$ "  
 600 x 900 x 22mm



23 $\frac{3}{8}$  x 23 $\frac{3}{8}$  x  $\frac{7}{8}$ "  
 600 x 600 x 22mm



17 $\frac{3}{4}$  x 23 $\frac{3}{8}$  x  $\frac{7}{8}$ "  
 450 x 600 x 22mm



11 $\frac{1}{8}$  x 23 $\frac{3}{8}$  x  $\frac{7}{8}$ "  
 300 x 600 x 22mm

Consult your regional Product Data Resource Guide for locally stocked colors. Coping, Step and Pillar Cap units are available, visit [Unilock.com](http://Unilock.com) for details. Additional Natural Stone and custom options are available in this product line; contact your Representative for more information.



**PRODUCT:** Porcelain - Gotham Nero  
**PROJECT:** 3033 N. Clark, Chicago, IL  
**DESIGNER:** Owner

# PORCELAIN TILE



Travstone Beige



Travstone Noce



Gotham Beige



Gotham Grey



Gotham Nero



Arbor Bianco



LaScala Beige



LaScala Grey



23 $\frac{3}{8}$  x 23 $\frac{3}{8}$  x  $\frac{3}{4}$ "  
600 x 600 x 20mm



15 $\frac{3}{4}$  x 31 $\frac{1}{2}$  x  $\frac{3}{4}$ "  
400 x 800 x 20mm

ARBOR AND LASCALA ONLY



16 x 48 x  $\frac{3}{4}$ "  
400 x 1200 x 20mm

ARBOR ONLY



Epokal Beige



Epokal Beige Scuro



Epokal Grey



DaVinci Birch



DaVinci Driftwood



Dolomiti Grey



Dolomiti Noce



23 $\frac{3}{8}$  x 23 $\frac{3}{8}$  x  $\frac{3}{4}$ "  
600 x 600 x 20mm



15 $\frac{3}{4}$  x 31 $\frac{1}{2}$  x  $\frac{3}{4}$ "  
400 x 800 x 20mm

DAVINCI AND EPOKAL ONLY



16 x 48 x  $\frac{3}{4}$ "  
400 x 1200 x 20mm

DOLOMITI ONLY



Beola Bianca



Graustein



Eikon Gea



Eikon Titanio



Rimini



23 $\frac{3}{8}$  x 23 $\frac{3}{8}$  x  $\frac{3}{4}$ "  
600 x 600 x 20mm



In 2019, U-Cara received the  
"red dot" award for high design  
quality and innovation.

**reddot** [www.registration.pd.red-dot.de](http://www.registration.pd.red-dot.de)



# U-CARA® MULTI-FACE WALL SYSTEM

The U-Cara Multi-Face Wall System lets you create one-of-a-kind walls and vertical hardscaping features with any design aesthetic. This two-component wall system, consisting of a structural base and interchangeable fascia panels, excels in strength, ease of installation, and design flexibility.

## DESIGNING WITH U-CARA

### STEP 1

#### CHOOSE YOUR U-CARA DESIGN PALETTE

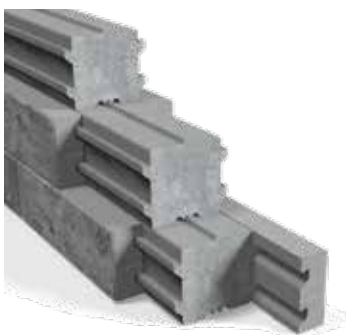
Select a color and surface texture for the exterior finishing panels.



### STEP 2

#### CHOOSE YOUR METHOD OF CONSTRUCTION

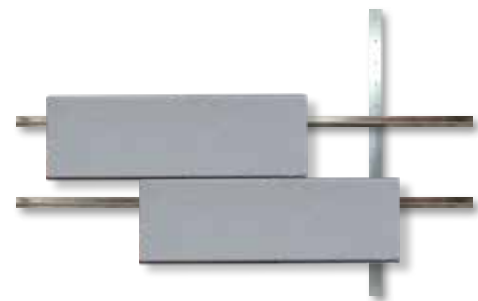
Select a structural component for your finishing panels. U-Cara panels easily slide onto the built-in tracks of the **Segmental Backer Block System**, **Prefabricated Modular System** or **Wall Mount System**.



SureTrack™ Backer Blocks



U-Cara Modular System



U-Cara Wall Mount System

### STEP 3

CONSULT A UNILOCK REPRESENTATIVE FOR CROSS SECTIONS AND DESIGN DETAILS

# U-CARA® DESIGN PALETTE

U-Cara fascia panels are available in a variety of colors and textures, including **Unilock® EnduraColor finishes**, allowing for patterning, inlays, and texture changes. The versatility of panel options gives designers the ability to flex their creativity and extend patterning and finishes from groundwork to vertical.

## UMBRIANO® FINISH



FRENCH GREY

MIDNIGHT SKY

WINTER MARVEL

SUMMER WHEAT

### TECHNICAL ADVANTAGES

#### ENDURACOLOR™

Refined surface and long-lasting color

#### COLORFUSION™ TECHNOLOGY

Subtly mottled color finish

## SERIES™ FINISH



BLACK GRANITE

ALSO AVAILABLE IN 3" PANEL

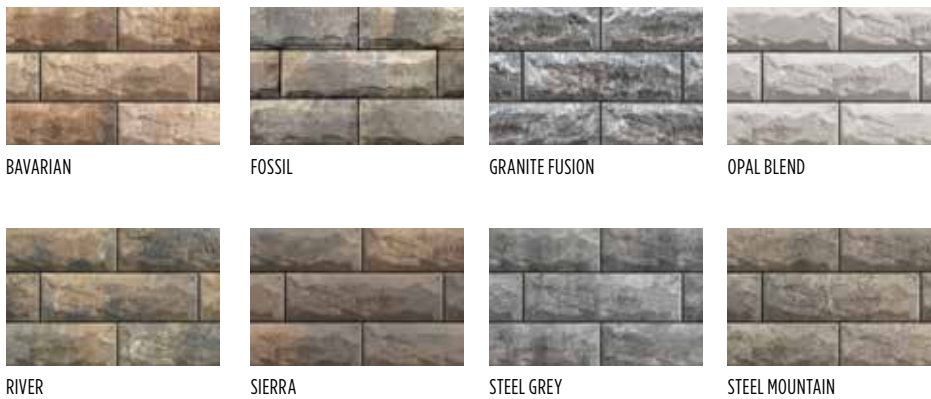
### TECHNICAL ADVANTAGES

#### ENDURACOLOR™

Refined surface and long-lasting color

Granite, Quartz and Marble surface materials.

## PITCHED FINISH



BAVARIAN

FOSSIL

GRANITE FUSION

OPAL BLEND

RIVER

SIERRA

STEEL GREY

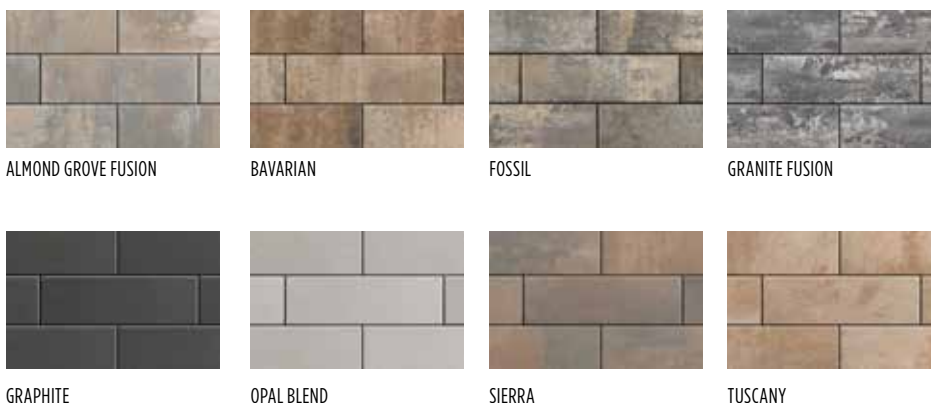
STEEL MOUNTAIN

### TECHNICAL ADVANTAGES

#### ENDURACOLOR™

Refined surface and long-lasting color

## SMOOTH PREMIER FINISH



ALMOND GROVE FUSION

BAVARIAN

FOSSIL

GRANITE FUSION

GRAPHITE

OPAL BLEND

SIERRA

TUSCANY

### TECHNICAL ADVANTAGES

#### ENDURACOLOR™

Refined surface and long-lasting color

# U-CARA FASCIA PANELS

The standard size fascia panel is 6" x 18½". Closed-end corner units and half-size panels are sold as a separate bundle to facilitate automatic offset joints without cutting. Use these standard size panels alone or in combination with smaller 3" x 9¼" fascia panels, which are available in selected colors and finishes for accenting.

CORNER BUNDLE



**6" STANDARD FASCIA PANEL**  
6 x 18½ x 2⅞"  
150 x 466 x 60mm



**STANDARD FASCIA HALF PANEL**  
6 x 9¼ x 2⅞"  
150 x 233 x 60mm



**CLOSED-END FASCIA PANEL**  
6 x 21 x 2⅞"  
150 x 540 x 60mm



**3" FASCIA PANEL**  
3 x 9¼ x 2⅞"  
75 x 233 x 60mm  
SERIES FINISH ONLY



# U-CARA® CONSTRUCTION OPTIONS

## SURETRACK™ BACKER BLOCKS

U-Cara SureTrack backer blocks are segmental retaining wall units that create strong and dimensionally accurate structures for vertical landscape features. The backer blocks allow for structural and non-structural walls, single or double sided.



**SURETRACK STANDARD BACKER**

6 x 8 x 6"  
150 x 200 x 150mm



**SURETRACK LARGE BACKER**

6 x 7 x 12"  
150 x 175 x 300mm



**NEW SURETRACK CORNER BACKER**

6 x 7 x 12"  
150 x 175 x 30mm

## APPLICATIONS

- | Single-Sided Walls
- | Double-Sided Walls
- | Garden Walls & Steps
- | Fire Pits
- | Water Features
- | Engineered Walls

U-Cara fascia panels hang easily on the patented **SureTrack**® backer block.





# U-CARA CONSTRUCTION OPTIONS

## U-CARA MODULAR SYSTEM

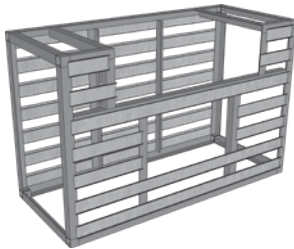
U-Cara is also available as a modular system for easy installation of grill islands, pillars and other free standing architectural features. The structural component of this system is made of prefabricated aluminum frames and the finished exterior is achieved by hanging the U-Cara fascia panels on the built-in tracks.

### BASE MODULE



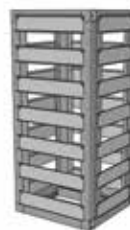
**Fascia Panel Module Dimensions**  
32 1/2" x 69 1/2" (Outside to Outside)  
Height 45" including coping

### GRILL MODULE



**Fascia Panel Module Dimensions**  
32 1/2" x 69 1/2" (Outside to Outside)  
Height 45" including coping

### PILLAR MODULE



**Fascia Panel Module Dimensions**  
24" x 24" (Outside to Outside)  
Height 45" including coping

## APPLICATIONS

- | Standalone Bar Tables
- | Fire Tables
- | Grill Islands
- | Full Size Outdoor Kitchens
- | Barriers & Dividers
- | Planters

U-Cara fascia panels hang easily on the built-in tracks of the modular frame.



# U-CARA® CONSTRUCTION OPTIONS

## U-CARA WALL MOUNT SYSTEM

The U-Cara Wall Mount System is an adaptation of the wall system. The structural component of this system consists of galvanized steel alignment bars and rails. This system allows the U-Cara fascia panels to be mounted directly to substrate materials such as plywood or concrete.

### VERTICAL ALIGNMENT BAR

- 38 5/8" tall
- Eliminates the need to measure for panel spacing
- Pre-Punched every 3" to accommodate both 3" & 6" panels
- Installed 32" apart

### HORIZONTAL RAIL

- 8ft long with pre-punched holes every 8"
- Can be used on both concrete and wood substrates



## APPLICATIONS

- | Wall Cladding
- | Integrated Landscape Features
- | Building Veneer
- | Aesthetic Foundation Coverings

U-Cara fascia panels hang easily on the rails.



# BENEFITS OF USING U-CARA IN AMENITY DESIGNS

Enhance roof deck spaces with stunning and practical architectural features designed with U-Cara.

## 1. BUILT-IN ROOF DECK AMENITIES

Added amenities such as water features, fire pits, bar islands, grilling stations, outdoor kitchens, and community garden planters add to property value and can provide an elevated experience for building residents, whether in a multi-family, condominium or office setting. U-Cara Multi-Face Wall System and Modular System enable you to seamlessly integrate these elements into your designs.

## 2. PLACEMAKING ELEMENTS

U-Cara can be used to create barriers and dividers to define spaces that may serve different purposes, from relaxation and seating areas, to cooking stations, or play areas. It can also be used to carve out walkways guiding individuals through an outdoor space.

## 3. COORDINATION WITH UNILOCK PAVERS

The diversity of U-Cara fascia panels allow for seamless coordination of vertical hardscaping elements with corresponding Unilock paver finishes and colors.

WITH U-CARA,  
THE ONLY LIMIT IS  
YOUR IMAGINATION.

Contact a Unilock Representative for more information on designing roof decks with U-Cara.





# RIVERCREST® WALL



In 2013, Rivercrest Wall received the "red dot" award for high design quality and innovation.

reddot [www.registration.pd.red-dot.de](http://www.registration.pd.red-dot.de)



Buff



Coastal Slate

## TECHNICAL ADVANTAGES

### REALA™ TECHNOLOGY

Cast from historic brick, cobble and stone

#### RANDOM WALL BUNDLE



8 x 9-10 x 2¼"  
200 x 230-250 x 60mm

12 x 9-10 x 2¼"  
310 x 230-250 x 60mm

12 x 9-10 x 2¼"  
310 x 230-250 x 60mm

17 x 9-10 x 2¼"  
425 x 230-250 x 60mm

#### CORNER BUNDLE



17½ x 9-10 x 2¼"  
450 x 230-250 x 57mm

14½ x 9-10 x 2¼"  
375 x 230-250 x 57mm

#### JUMPER WALL BUNDLE



8 x 9-10 x 4½"  
200 x 230-250 x 114mm

12 x 9-10 x 4½"  
310 x 230-250 x 114mm

12 x 9-10 x 4½"  
310 x 230-250 x 114mm

17 x 9-10 x 4½"  
425 x 230-250 x 114mm



Jumper Corner  
12 x 9-10 x 4½"  
310 x 230-250 x 114mm

Universal Base Unit  
2 x 19 x 14"  
55 x 482 x 355mm



# LINEO™ DIMENSIONAL WALL



Almond Grove

Granite Blend

Limestone

Mahogany Ash

Midnight Charcoal

Platinum



Sandalwood

Sandstone

Sierra

Sierra - Chicago

Walnut

## RANDOM WALL BUNDLE



12 x 4 x 8"  
300 x 100 x 200mm

16 x 4 x 8"  
400 x 100 x 200mm

20 x 4 x 8"  
500 x 100 x 200mm

24 x 4 x 8"  
600 x 100 x 200mm

Pillar Unit  
16 x 4 x 8"  
400 x 100 x 200mm

Universal Base Unit  
2 x 19 x 14"  
55 x 482 x 355mm

Consult your regional Product Data Resource Guide for locally stocked colors. For coping options, we recommend Ledgestone™ or Natural Stone from Unilock; see page 24 for more information.



# WALL COPING OPTIONS

LEDGESTONE™



Buff



Grey

## TECHNICAL ADVANTAGES

### REALA™ TECHNOLOGY

Cast from historic brick, cobble and stone



Coping Unit  
12 x 24 x 2 3/4"  
305 x 610 x 75mm



Fullnose Unit  
12 x 24 x 2 3/4"  
305 x 610 x 60mm



Large Coping Unit  
30 x 13 1/2 x 2 3/4"  
122 x 61 x 7cm

NATURAL STONE



Indian Coast



Autumn Harvest



Stone Cliff Grey



Black River



Natural Edge Coping Unit  
Available in 3 sizes:  
16 x 48 or 72 x 2"  
400 x 1200 or 1820 x 50mm  
12 x 48 or 72 x 2"  
300 x 1200 or 1820 x 50mm  
14 x 48 or 72 x 2"  
356 x 1200 or 1820 x 50mm



Fullnose Coping Unit  
12 x 48 or 72 x 2"  
200 x 1200 or 1820 x 50mm





**PRODUCT:** Umbriano® - Summer Wheat and Series™ - Onyx Black  
**PROJECT:** Hubbard Place, Chicago, IL  
**DESIGNER:** Daniel Weinbach & Partners, Ltd.

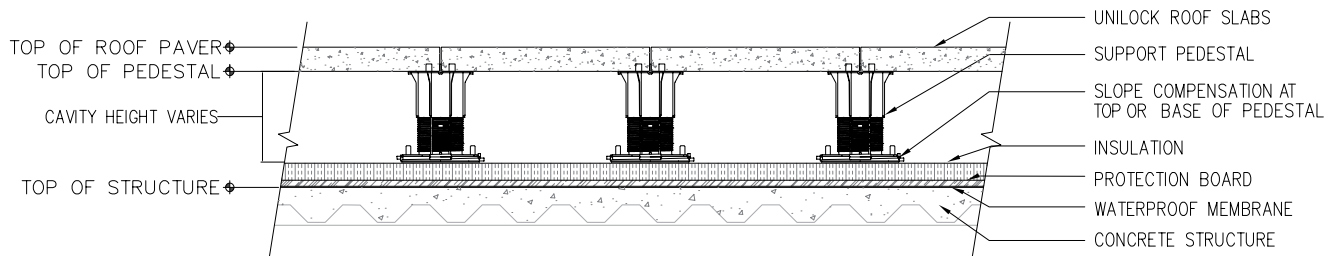
# ROOF DECK INSTALLATION SYSTEMS

The cross sections below are examples of the type of installation system and technical features of Unilock products. Unilock shall not be deemed responsible for improper use of the product or of damage deriving from any use different from those recommended and/or installation procedures not in line with the following instructions relevant to a raised installation.

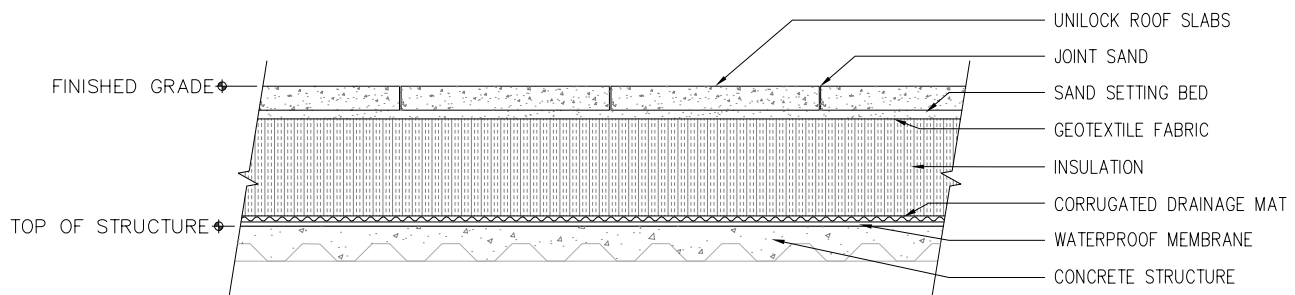
**All roof top slab/pedestal installations must be engineered by a professional engineer.**

## PEDESTAL SYSTEM

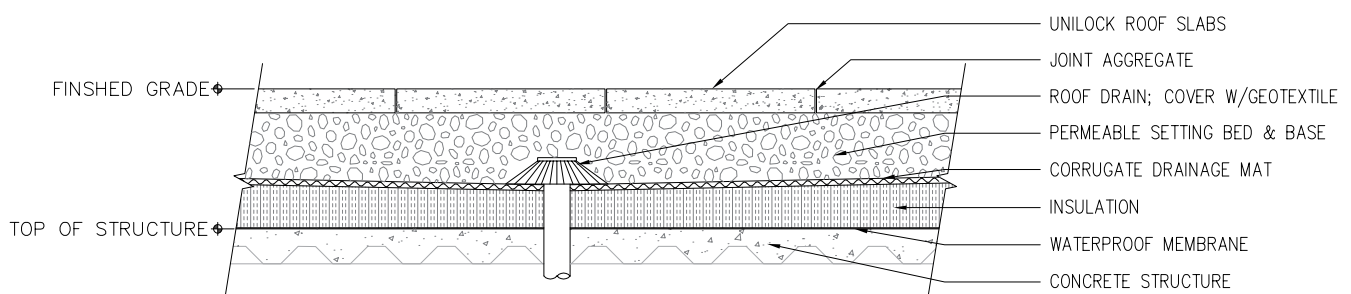
Unilock offers adjustable and stackable pedestal systems for your project. Contact your Unilock Representative to learn more. Specific installation details may vary based on pedestal height, load-bearing requirements, safety standards and wind-lift.



## SAND SET WITH DRAINAGE MAT AND INSULATION

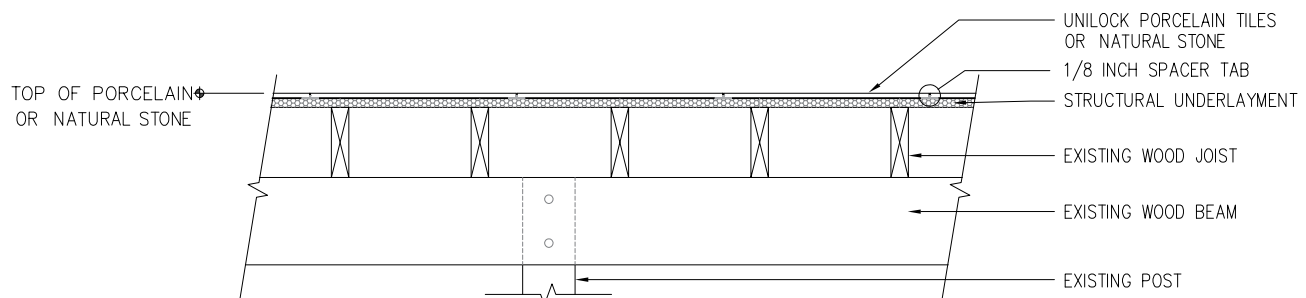


## GRANULAR BASE SYSTEM



## DECK RETROFIT SYSTEM

Unilock offers structural underlayment systems for your project. Contact your Unilock Representative to learn more.







**PRODUCT:** Umbriano® - Winter Marvel and Il Campo® Granite Blend  
**PROJECT:** One York, Toronto, ON  
**DESIGNER:** The NAK Design Group



**UNILOCK**<sup>®</sup>

DESIGNED TO CONNECT.

UNILOCK.COM | 1-800-UNILOCK

---

BOSTON (508) 278-4536	BUFFALO (716) 822-6074	CHICAGO (630) 892-9191	KANSAS CITY (913) 417-7985
CLEVELAND (330) 927-4000	DETROIT (248) 437-7037	MILWAUKEE (262) 742-3890	NEW YORK (845) 278-6700
MID-ATLANTIC (202) 798-2060	TORONTO (416) 646-9000		

©2019 Hengestone Holdings, Inc.

COVER PHOTO: PRODUCT: Skyline™ - New York Blend in Smooth Premier Finish  
PROJECT: 99 Tremont @ Oak Square, Brighton, MA DESIGNER: Radner Design Associates, Inc.